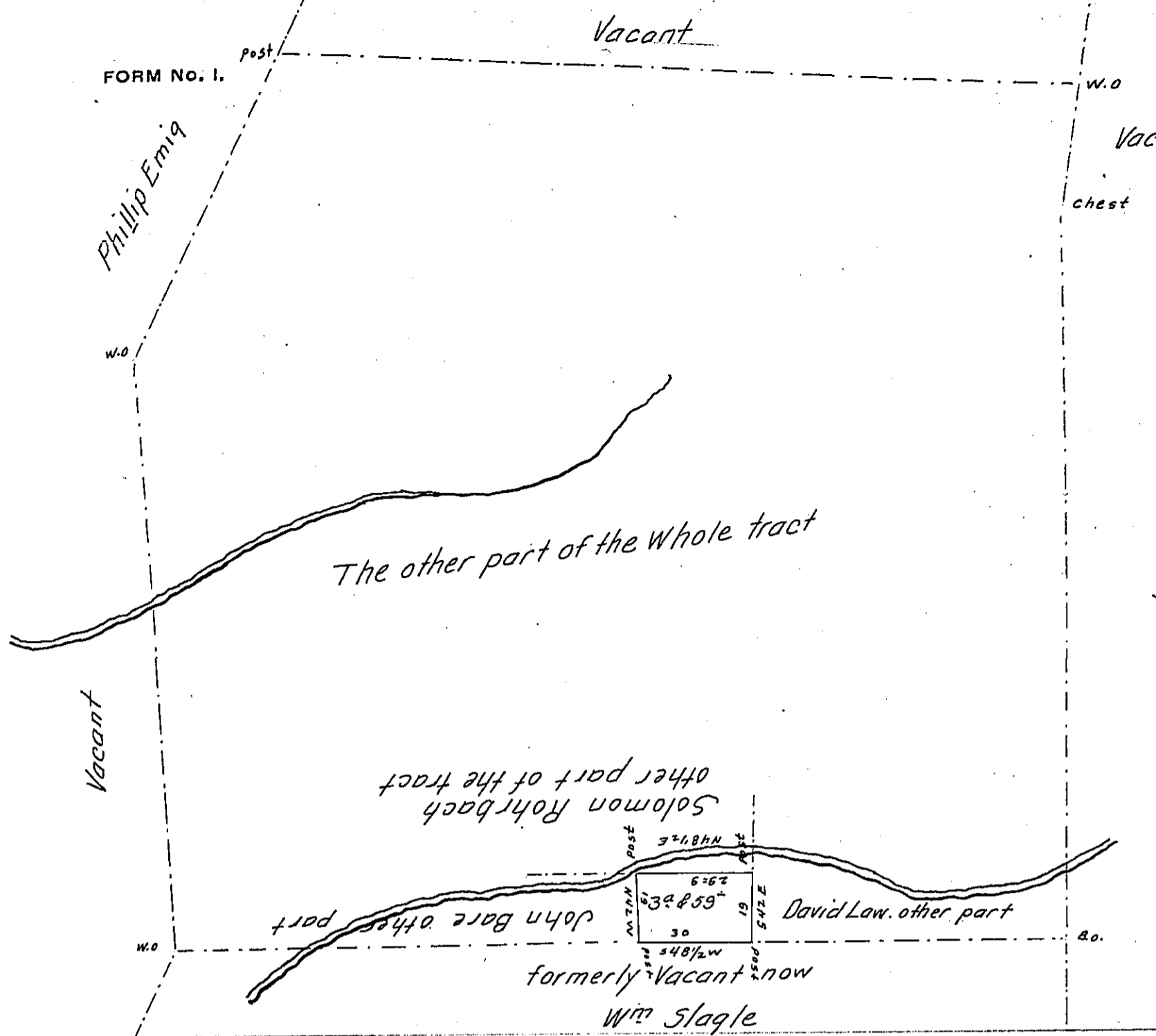


FORM NO. 1.



John Bingale

A Draught of a Piece of Land. Situate in Codorus Township in the County of York. Containing as above Set forth 39° & 59' perch. & allowance &c. part of 292° & allowance &c. Which was Originally Surveyed on the 23^d day of October 1751. by George Stevenson. late D.S. In pursuance of a Warrant for 150^a granted to Hans Nicholas Maak. bearing date the 10th day of September 1750. Since Resurveyed and divided &c. Now on the 4th day of August A. D. 1837. Examined & Corrected the above &c. at the request of Samuel Bare. the present owner. Who requested me to make return of the Same for Confirmation.

To John Taylor. Esquire } per. D^e Leese D. S.
 Surveyor General

IN TESTIMONY that the above is a copy of the original remaining on file in the Department of Internal Affairs of Pennsylvania, made conformably to an Act of Assembly approved the 16th day of February, 1833, I have hereunto set my Hand and caused the Seal of said Department to be affixed at Harrisburg, this sixteenth day of April 1906.

Isaac Brown
 Secretary of Internal Affairs.